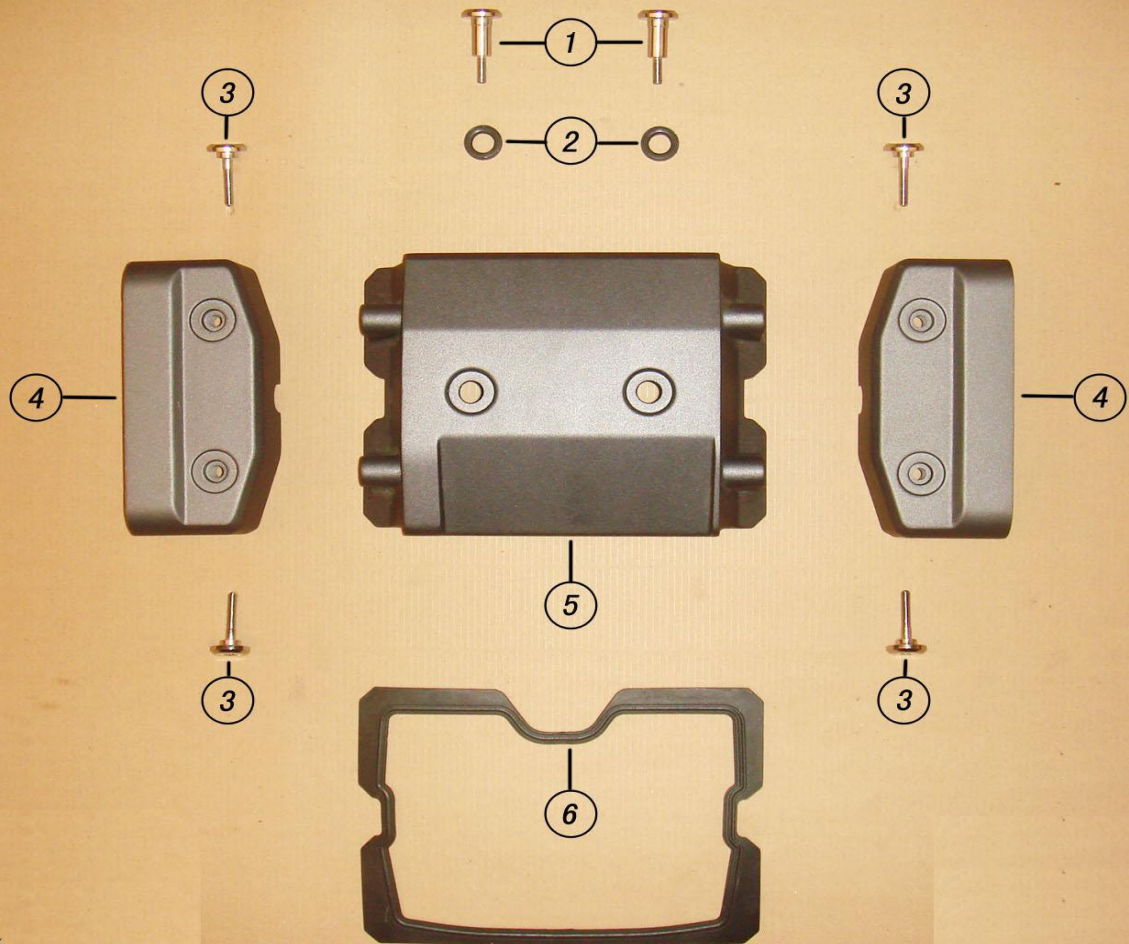


320CC ENGINE PARTS BOOK

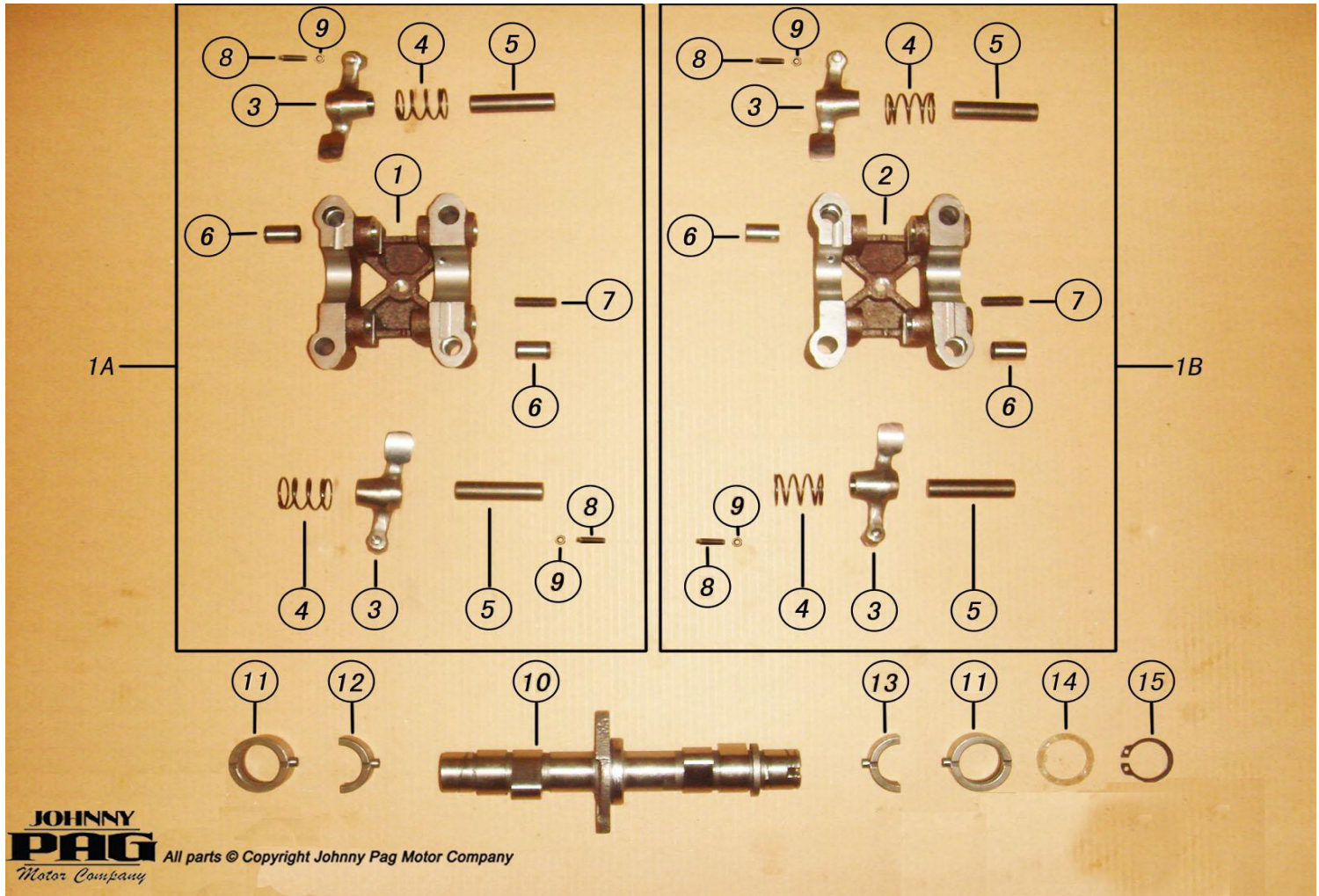
ALL INFORMATION, ILLUSTRATIONS PHOTOGRAPHS, AND SPECIFICATIONS CONTAINED IN THIS BOOK ARE BASED ON THE LATEST PRODUCT INFORMATION AVAILABLE AT THE TIME OF PUBLICATIONS. DUE TO IMPROVEMENTS OR OTHER CHANGES, THERE MAY BE SOME DISCREPANCIES IN THIS BOOK. JOHNNY PAG MOTOR COMPANY RESERVES THE RIGHT TO MAKE CHANGES AT ANY TIME.

PLEASE NOTE THAT YOUR MODEL MAY HAVE DIFFERENT STANDARD FEATURES THAN SHOWN IN THIS BOOK.

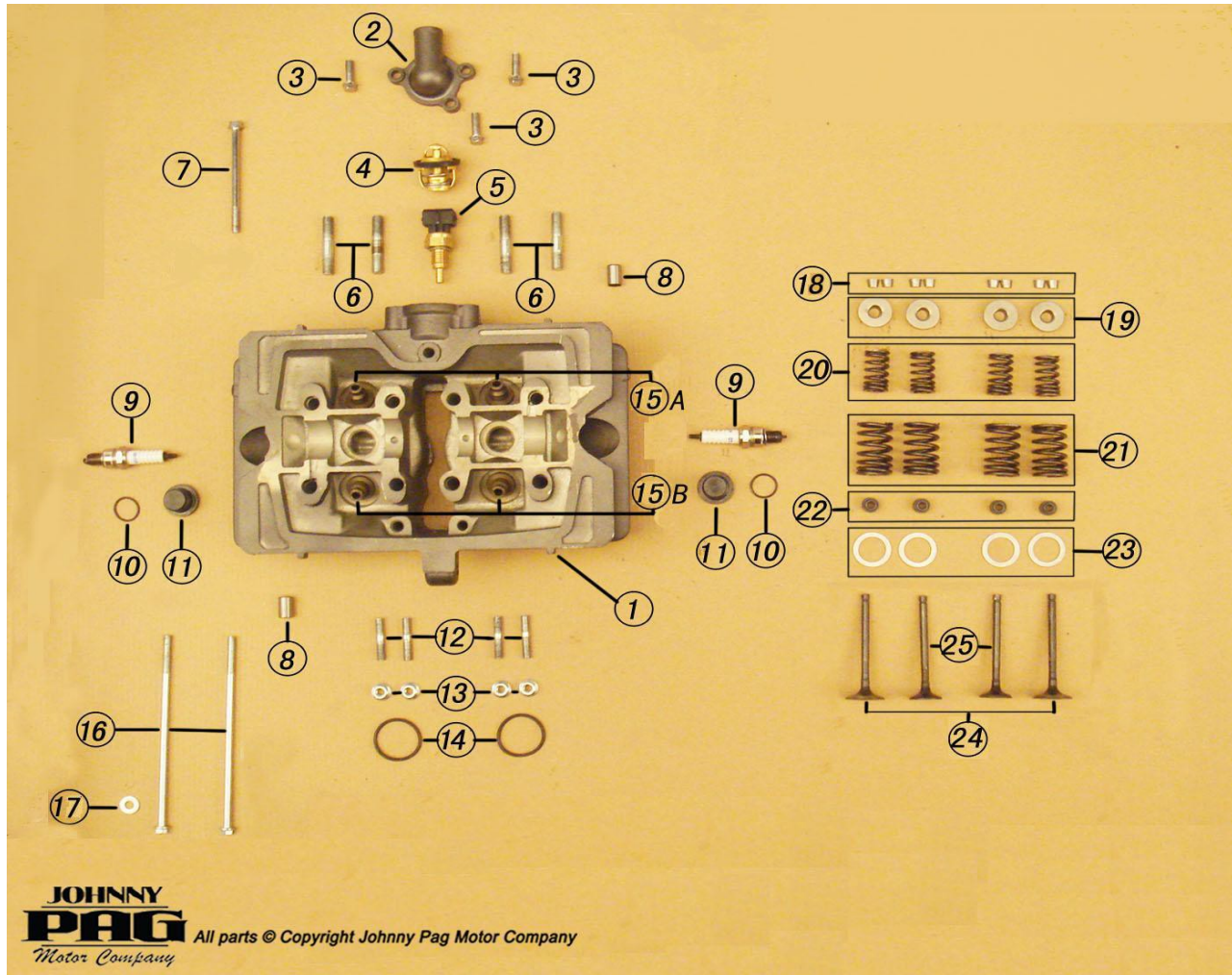
2012. 11. 01.



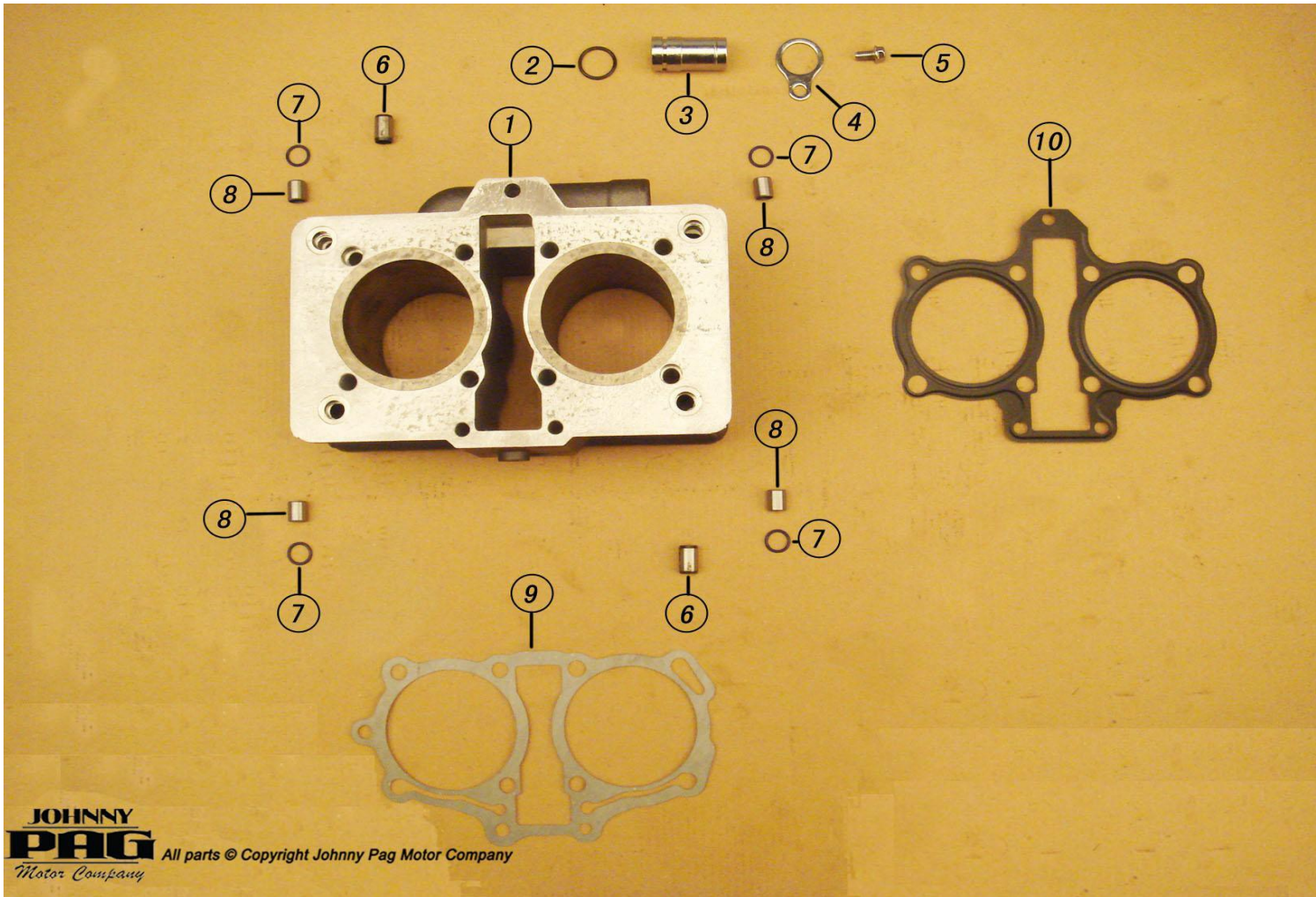
NO.	Part NO.	Description	
1	D40-40243	Head Cover Bolt, Top	
2	D40-40244	Washer, Rubber	
3	D40-40245	Head Cover Bolt, Side	
4	D40-40001	Cylinder Head Cover, Side	
5	D40-40002	Cylinder Head Cover, Top	
6	D40-40003	Gasket, Head Top - Rubber	



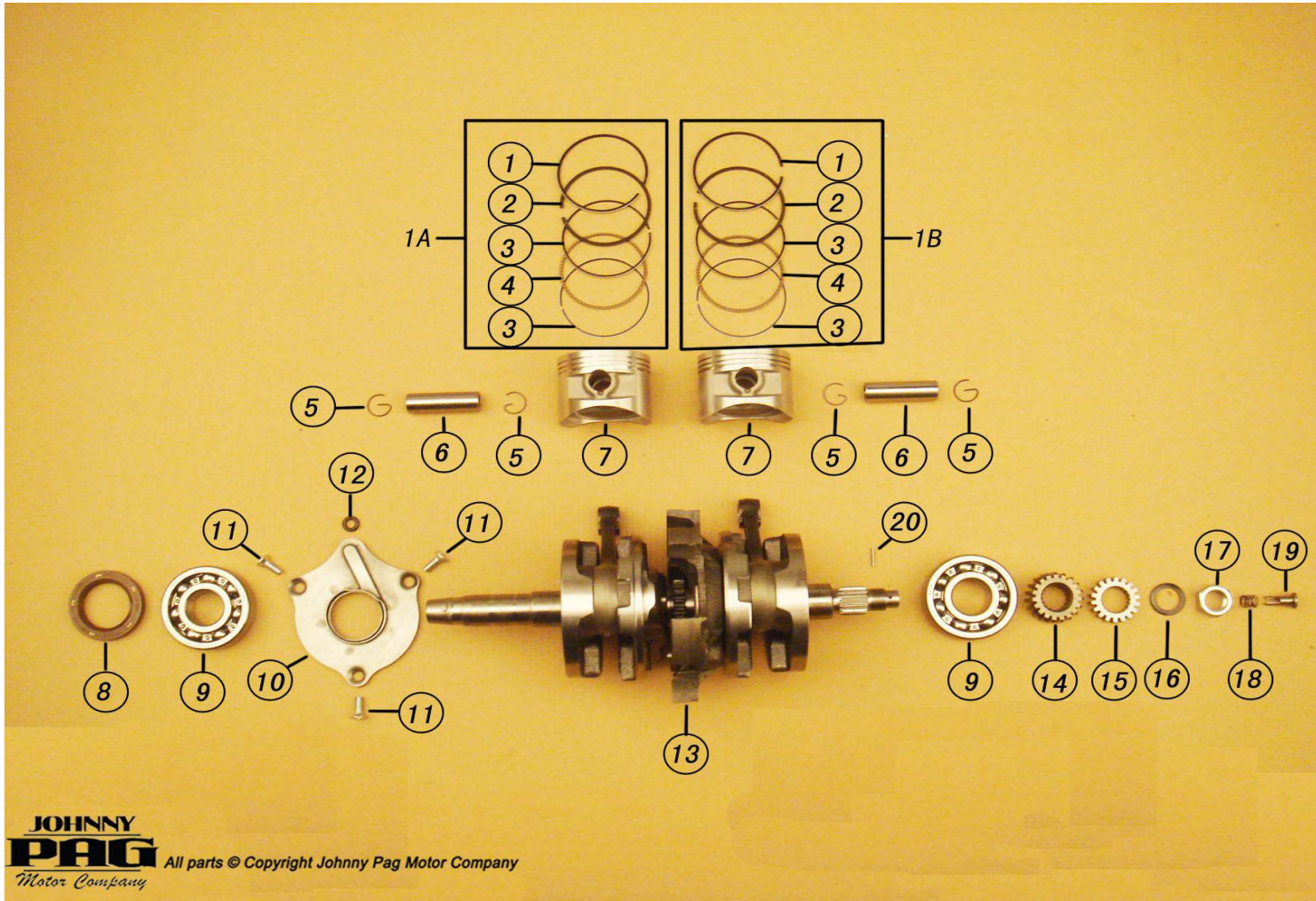
NO.	Part NO.	Description
1A	D100-00001	Right Rocker Assembly
1B	D100-00002	Left Rocker Assembly
1	D40-40004	Right Camshaft Guide
2	D40-40005	Left Camshaft Guide
3	D40-40006	Rocker Arm
4	D40-40007	Spring, Rocker Arm
5	D40-40008	Shaft, Rocker Arm
6	D40-40009	Pin 10x16
7	D40-40010	Pin M6x20
8	D40-40011	Valve Adjustment screw
9	D40-40012	Valve Adjustment Jam Nut
10	D40-40013	Camshaft
11	D40-40014	Bushing, Camshaft
12	D40-40015	Right Support Bushing, Camshaft
13	D40-40016	Left Support Bushing, Camshaft
14	D40-40017	Washer
15	D40-40018	Circlip



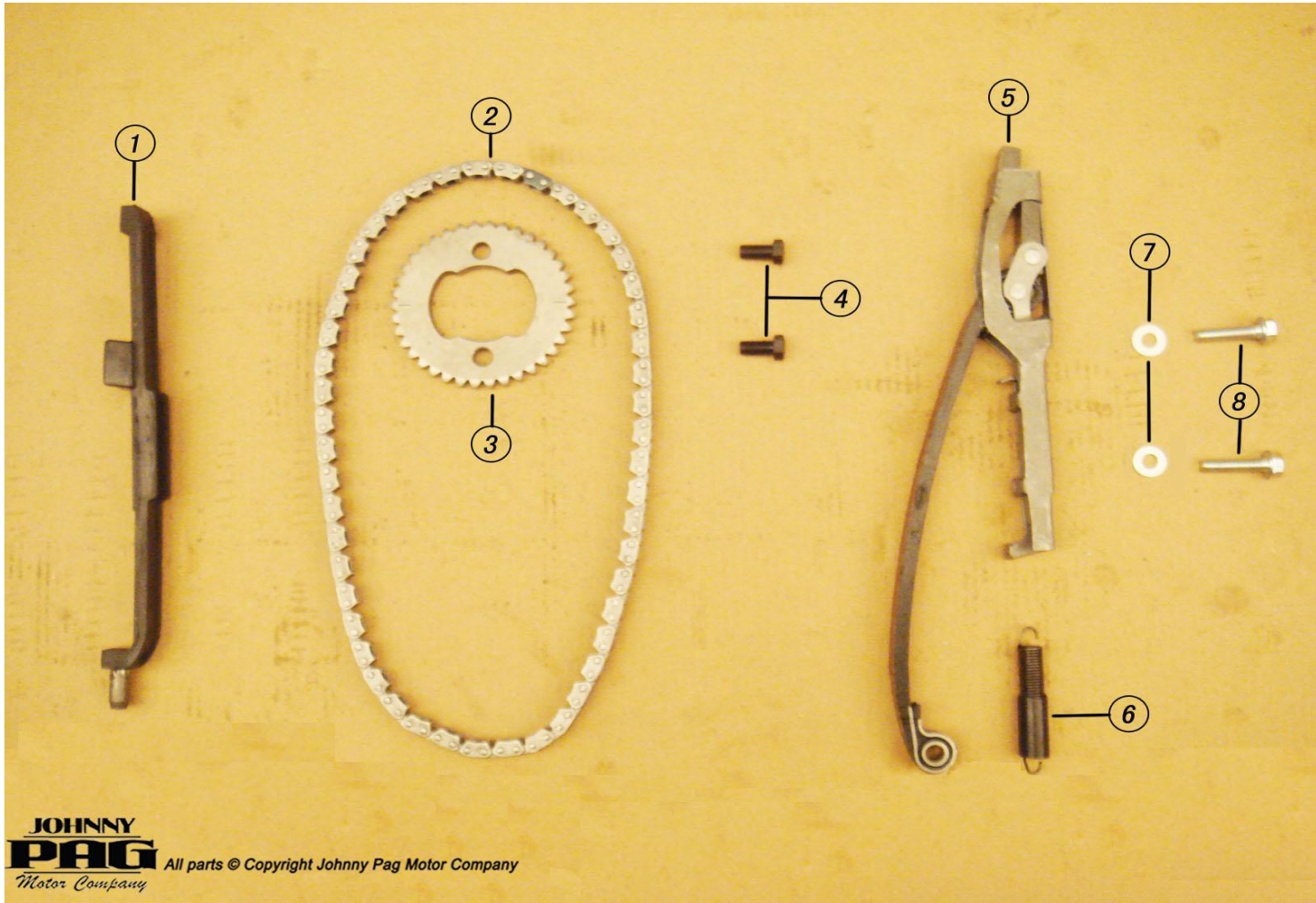
NO.	Part NO.	Description
1	D40-40019	Cylinder Head
2	D40-40020	Thermostat Cover
3	H800-80011	Bolt M6x20
4	D40-40022	Thermostat
5	D40-40023	Temperature Sensor
6	D40-40247	Exhaust Stud Bolt M8x45
7	H800-80024	Bolt M6x80
8	D40-40009	Pin 10x16
9	D40-40027	Spark Plug A7RTC
10	H400-40000	O-Ring 15.5 x 1.5
11	D40-40248	Plug M18x1.5
12	D40-40030	Manifold Stud Bolt M6x32
13	H900-90001	Nut M6
14	H400-40001	O-Ring 29x2
15A	D40-40033	intake Valve, Guide Tube
15B	D40-40034	Exhaust Valve, Guide Tube
16	H800-80025	Bolt M6x145
17	H700-70000	Washer M6
18	D40-40037	Valve locking
19	D40-40038	Valve locking washer
20	D40-40039	Spring, Valve Inner
21	D40-40040	Spring, Valve Outer
22	D40-40041	Valve guider tube seal
23	D40-40042	Washer
24	D40-40043	Intake Valve
25	D40-40044	Exhaust Valve



NO.	Part NO.	Description
1	D40-40045	Cylinder Base
2	H400-40002	O-Ring 17x2
3	D40-40047	Hose Connector
4	D40-40048	Hose Connector Setting Plate
5	H800-80006	Bolt M6x12
6	H500-50143	Pin 8x14
7	H400-40003	O-Ring 10x1.6
8	H500-50144	Pin 10x12
9	D40-40053	Gasket, Cylinder Base
10	D40-40054	Gasket, Cylinder Head

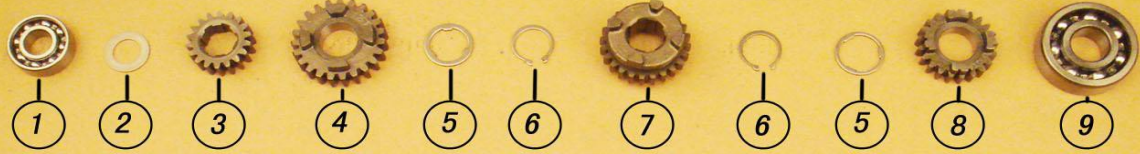


NO.	Part NO.	Description
1	D40-40055	Top Compression Ring
2	D40-40056	Second Compression Ring
3	D40-40057	Oil Ring
4	D40-40058	Expander Spacer
5	D40-40059	Retainer Clip
6	D40-40060	Piston Pin
7	D40-40061	Piston
8	H400-40004	Oil Seal 35x52x7
9	H400-40005	Bearing 6305/P6
10	D40-40064	Oil Guide Plate
11	H800-80004	Bolt M6x16
12	H400-40006	O-Ring 6x3
13	D40-40067	Crankshaft Assembly
14	D40-40068	Primary Drive Gear
15	D40-40069	Oil Pump Drive Gear
16	H700-70001	Washer 16x24x2
17	H900-90006	Nut M16x1
18	D40-40072	Spring
19	D40-40246	Oil Pin
20	H500-50145	Pin 2x13.8
1A	D100-00003	Piston Ring Assembly

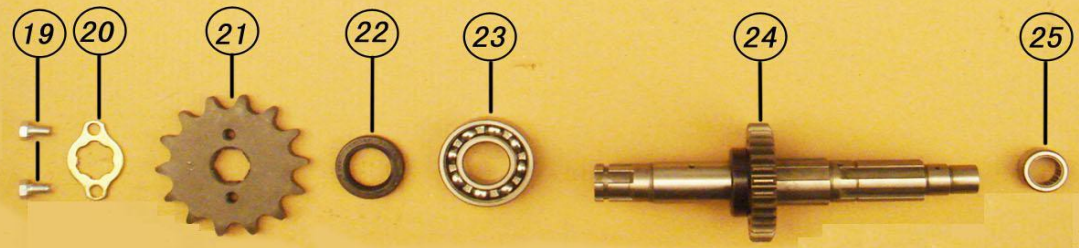
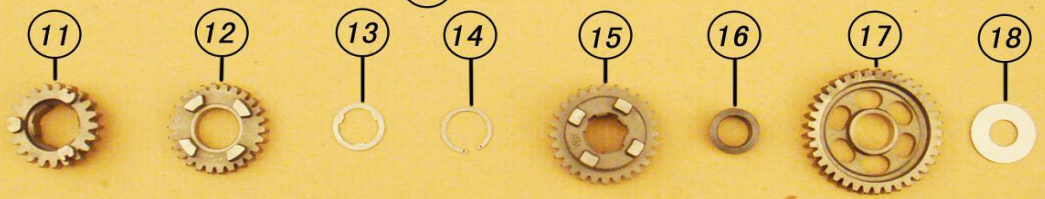


JOHNNY
PAG Motor Company
All parts © Copyright Johnny Pag Motor Company

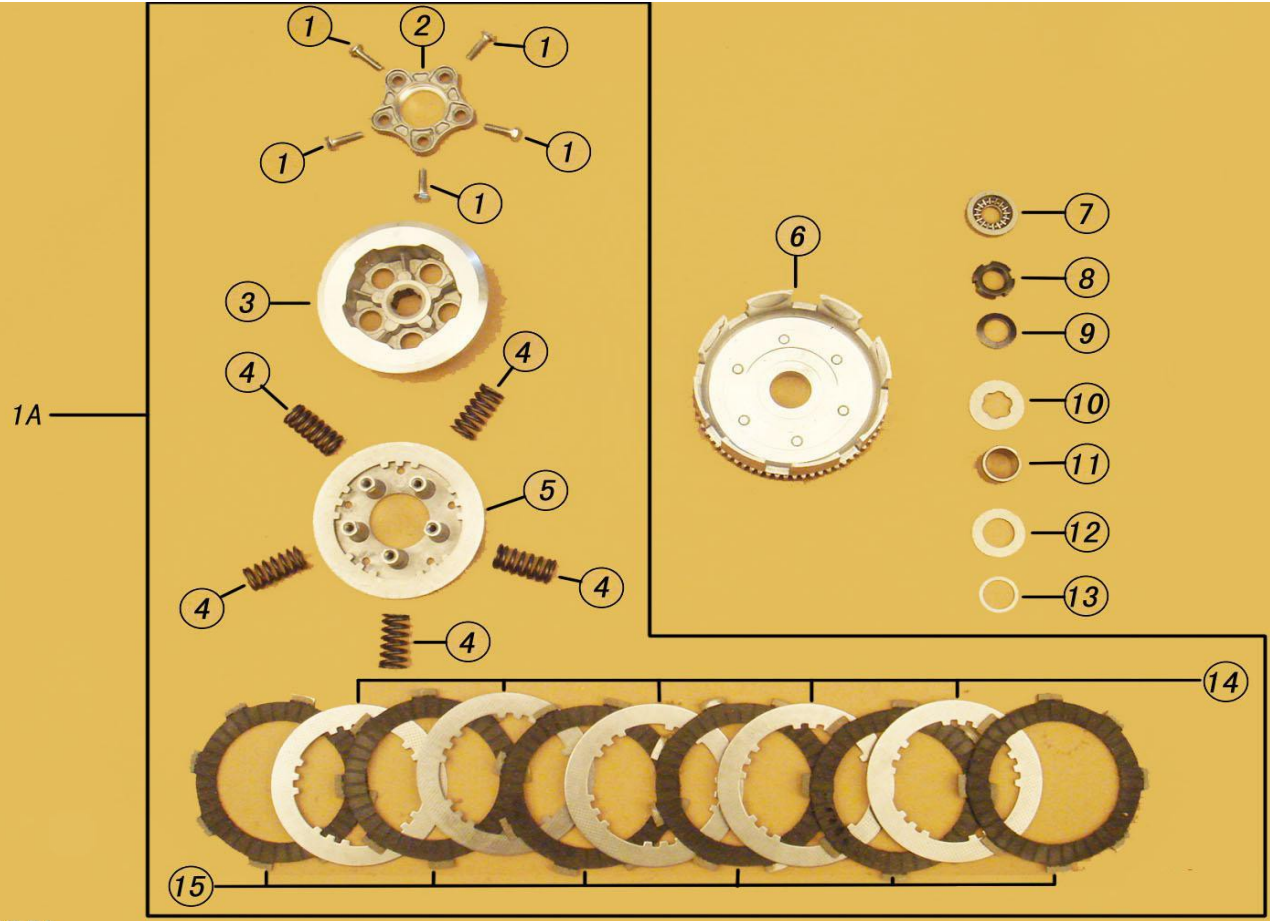
NO.	Part NO.	Description
1	D40-40073	Timing Chain Guide
2	D40-40074	Timing Chain
3	D40-40075	Camshaft Sprocket
4	H800-80026	Bolt M7x13
5	D40-40077	Timing Chain Tensioner
6	D40-40078	Tension Spring
7	H700-70000	Washer 6
8	H800-80027	Bolt M6x26



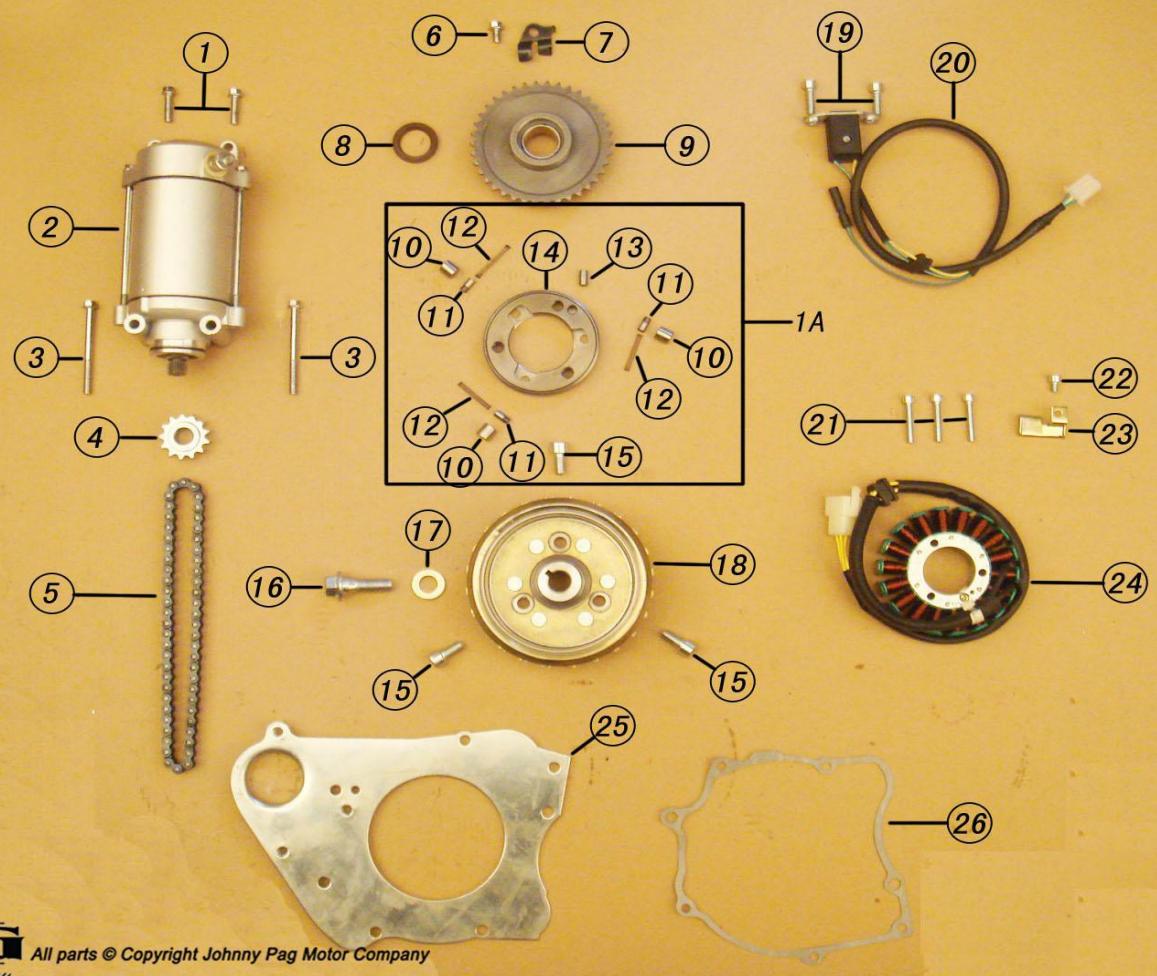
10



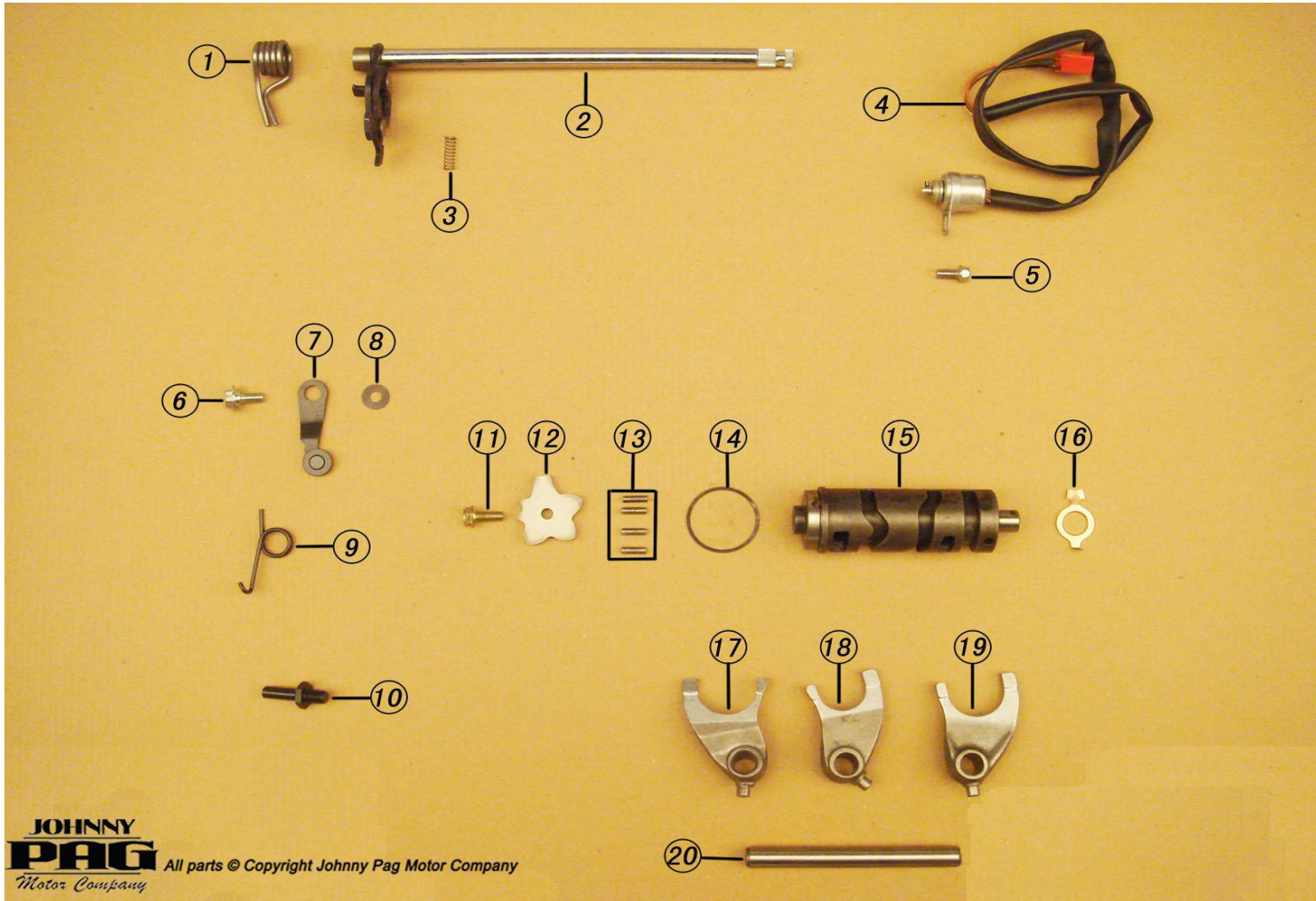
NO.	Part NO.	Description	
1	H400-40007	Bearing 6202-Z/P6	
2	H700-70002	Washer 15	
3	D40-40082	Gear, mainshaft second (18T)	
4	D40-40083	Gear, mainshaft fifth (23T)	
5	D40-40084	Washer ,spline	
6	D40-40085	Circlip	
7	D40-40086	Gear, mainshaft fourth (24T)	
8	D40-40087	Gear, mainshaft third (21T)	
9	H400-40008	Bearing 6304/P6	
10	D40-40089	Mainshaft comp	
11	D40-40090	Gear, countershaft fifth (21T)	
12	D40-40091	Gear, countershaft fourth (26T)	
13	D40-40092	Washer ,spline	
14	D40-40093	Circlip	
15	D40-40094	Gear, countershaft third (28T)	
16	D40-40095	Bush	
17	D40-40096	Gear, countershaft first (37T)	
18	H700-70002	Washer 15	
19	H800-80028	Bolt M6x10	
20	D40-40099	Plate, fixing	
21	D40-40100	Sprocket, counter shaft (14T)	
22	H400-40009	Oil Seal 22x34x7	
23	H400-40010	Bearing 22x47x14-RS/P6	
24	D40-40103	Countershaft comp	
25	H400-40011	Bearing NK152312	



NO.	Part NO.	Description
1	H800-80008	Bolt M6x25
2	D40-40105	Clutch Pressure Plate, Outer
3	D40-40106	Clutch Center Frame
4	D40-40107	Clutch Spring
5	D40-40108	Clutch Pressure Plate, Inner
6	D40-40109	Clutch Outer Shell
7	D40-40110	Pushing Bearing
8	D40-40111	Nut M16x1
9	D40-40112	Washer 16x26x2
10	D40-40113	Spline Washer
11	D40-40114	Sleeve
12	D40-40115	Washer 20
13	D40-40116	Washer 20x26x1
14	D40-40117	Clutch Plate
15	D40-40118	Friction Disk
1A	D100-00004	Clutch Pack, Assembly

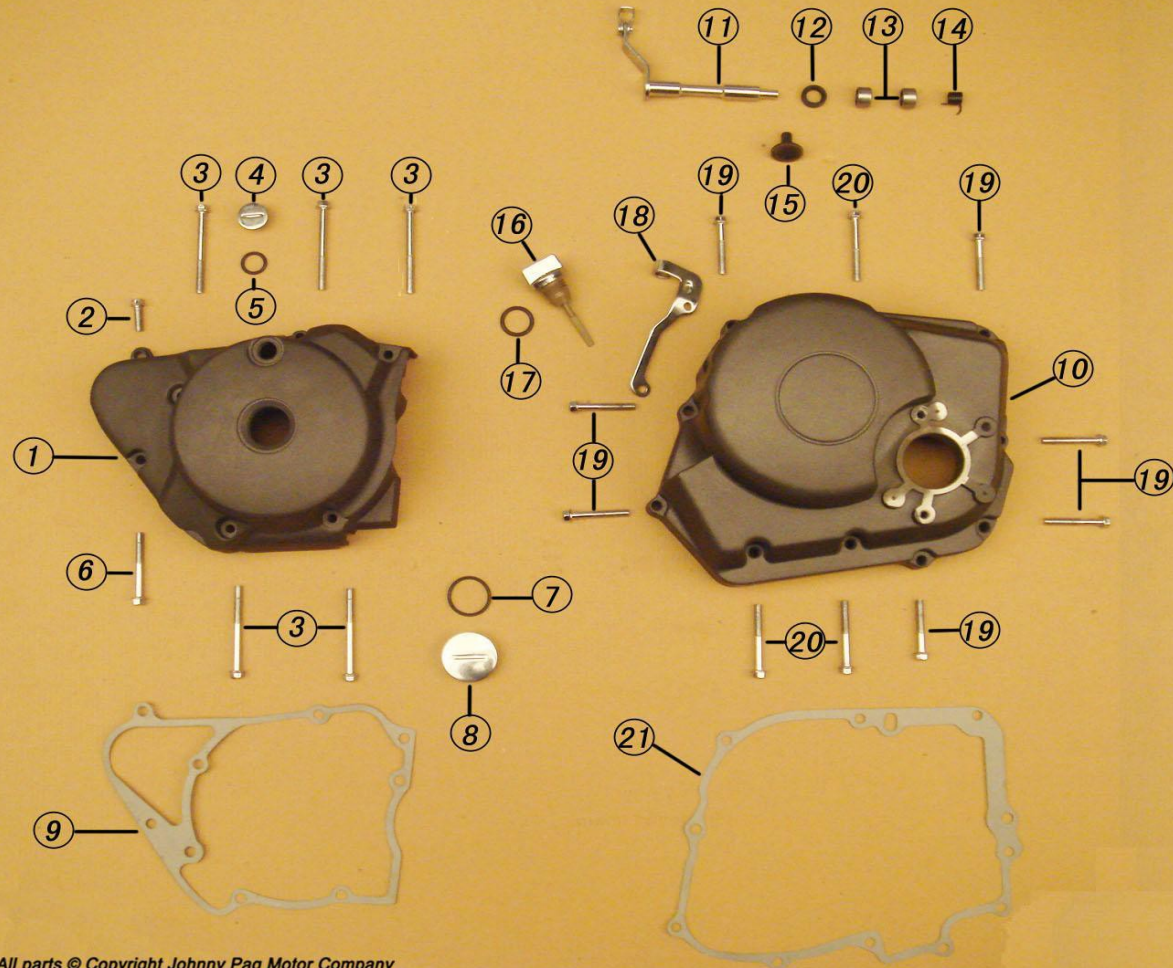


NO.	Part NO.	Description
1A	D100-00005	Starter Clutch, Assembly
1	H800-80029	Bolt M6x22
2	D40-40120	Starter
3	H800-80012	Bolt M6x65
4	D40-40122	Sprocket, Starter
5	D40-40123	Chain, Starter
6	H800-80028	BoltM6x10
7	D40-40125	Sprocket Guide
8	H400-40012	Oil Seal 22x31x5
9	D40-40127	Sprocket, Main Shaft, Starter
10	D40-40128	Roller
11	D40-40129	Magnetic Pin
12	D40-40130	Spring
13	H500-50146	Pin 6x12
14	D40-40132	Starter Clutch base
15	H800-80030	Bolt M8x16
16	D40-40134	Bolt Flywheel (M10x1.25)
17	D40-40135	Washer 12
18	D40-40136	Flywheel
19	H800-80031	Bolt M6x18
20	D40-40138	Pulse Generator
21	H800-80032	Bolt M5x30
22	H800-80033	Bolt M5x8
23	D40-40141	Pressure Bracket
24	D40-40142	Stator
25	D40-40143	Case Cover Spacer
26	D40-40144	Gasket, Case Cover Inner

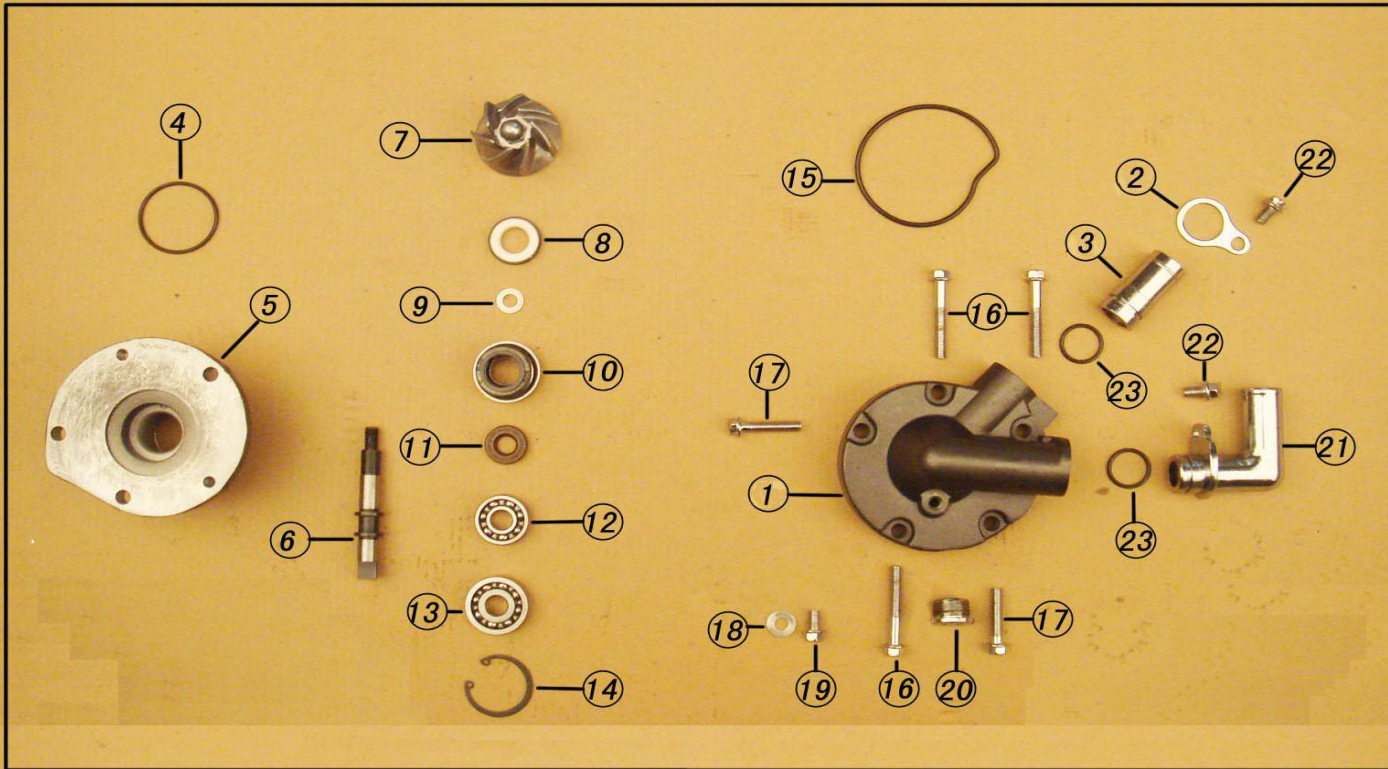


JOHNNY
PAG Motor Company
All parts © Copyright Johnny Pag Motor Company

NO.	Part NO.	Description
1	D40-40148	Positioning Spring
2	D40-40149	Gear Shift Spindle
3	D40-40150	Spring
4	C20-20059	Transmission Indicator
5	H800-80028	Bolt M6x10
6	H800-80006	Bolt M6x12
7	D40-40154	Gear Shift Drum Stop
8	D40-40155	Washer 6.2x15x1
9	D40-40156	Spring, Gear Shift Drum Stop
10	D40-40157	Bolt 7.2
11	H800-80004	Bolt M6x16
12	D40-40159	Gear Plate
13	H500-50147	Pin (4x13)
14	H400-40013	O-Ring 34x38x1
15	D40-40162	Gear Drum
16	D40-40163	Retainer Clip
17	D40-40164	Right Gear Fork
18	D40-40165	Center Gear Fork
19	D40-40166	Left Gear Fork
20	D40-40247	Gear Drum Shaft

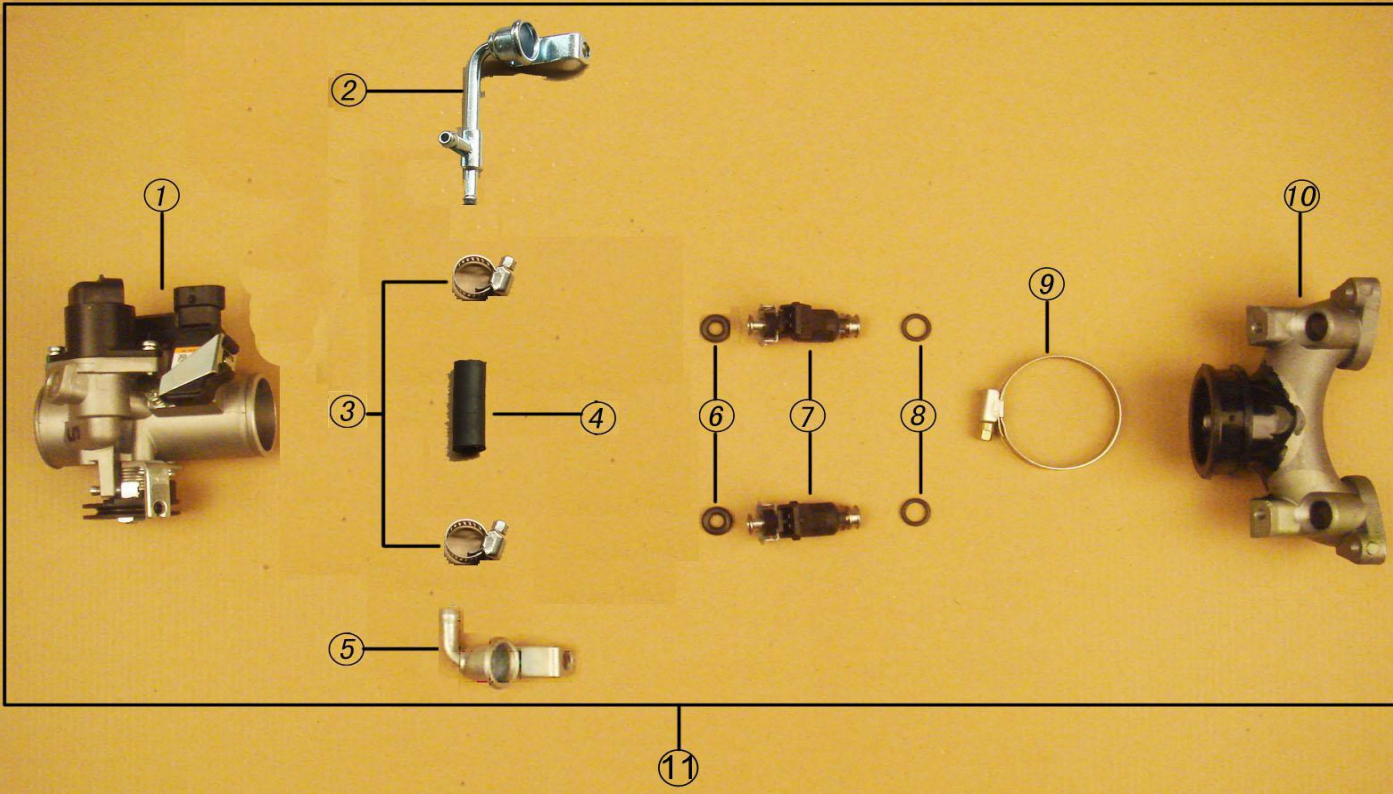


NO.	Part NO.	Description
1	D40-40167	Left Case Cover
2	H800-80011	Bolt M6x20
3	H800-80012	Bolt M6x65
4	D40-40170	Case Cover Plug, Screw M14x1.5
5	D40-40171	Washer 13.8x2.5
6	H800-80034	Bolt M6x50
7	H400-40014	O-Ring 25.8x2.4
8	D40-40174	Case Cover Plug, Screw M30x1.5
9	D40-40175	Gasket, Left Case Cover Outer
10	D40-40176	Right Case Cover
11	D40-40177	Cable Receiver, Clutch
12	H400-40015	O-Ring 12x18x5
13	H400-40016	Bearings HK1210
14	D40-40180	Spring, Clutch Receiver
15	D40-40181	Clutch Activator
16	D40-40182	Dipstick
17	H400-40017	O-Ring 18x3
18	D40-40184	Cable Receiver, Bracket
19	H800-80035	Bolt M6x40
20	H800-80034	Bolt M6x50
21	D40-40248	Gasket, Right Case Cover

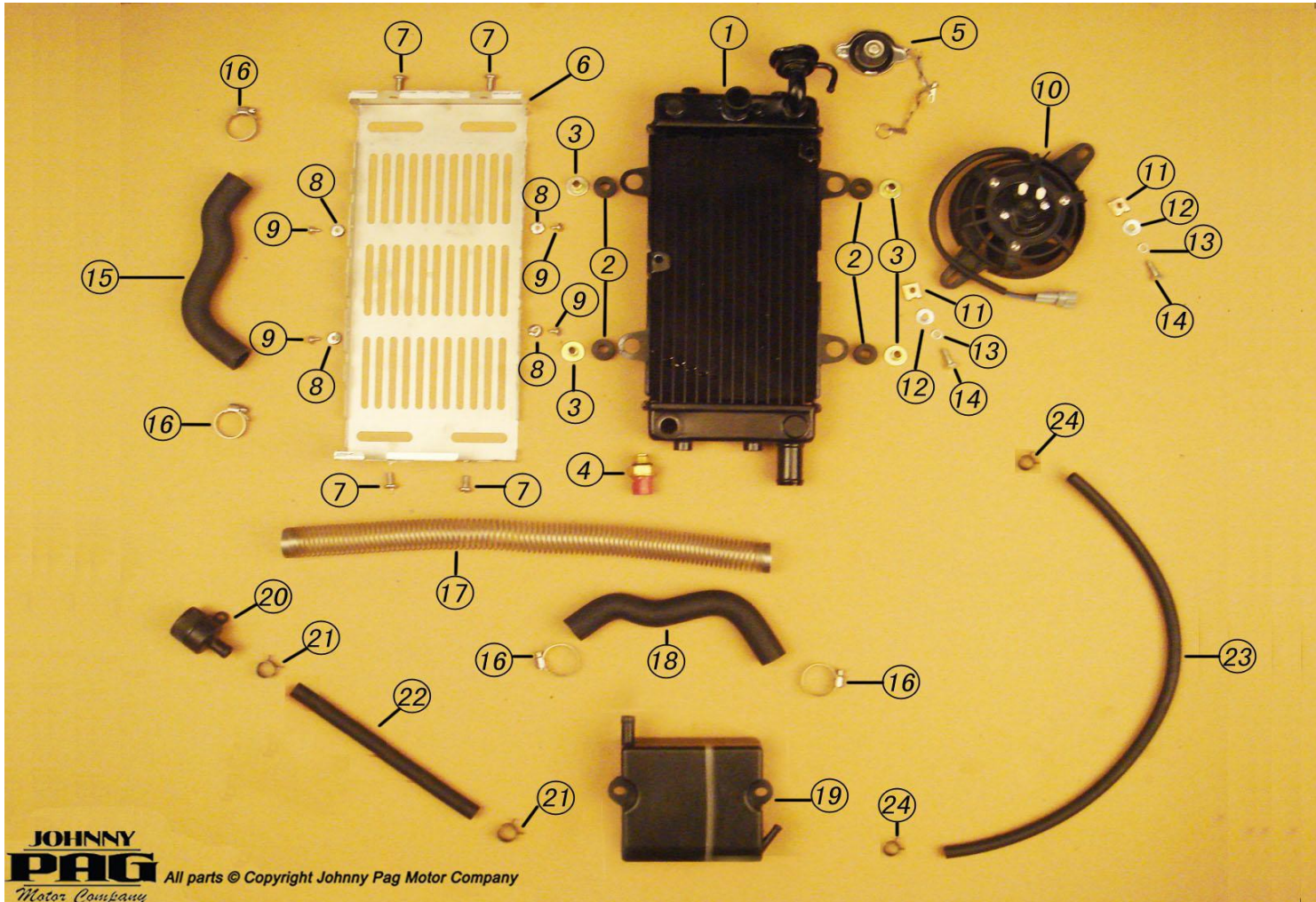


1A

NO.	Part NO.	Description	
1A	D100-00006	Water Pump, Asembly	
1	D40-40187	Water Pump Cover	
2	D40-40188	Hose Connector Setting Plate	
3	D40-40189	Hose Connector, Straight	
4	H400-40018	O-Ring 36x2	
5	D40-40191	Water Pump Hull	
6	D40-40192	Water Pump Shaft	
7	D40-40193	Propeller	
8	D40-40194	Water Seal	
9	H700-70003	Washer 7.5x13x1.2	
10	D40-40196	Pump Seal	
11	H400-40019	Seal 10x20x5	
12	H400-40020	Bearing 6000/P6	
13	H400-40021	Bearing 6200/P6	
14	H500-50160	Circlip 30	
15	H400-40022	O-Ring, Water Pump	
16	H800-80035	Bolt M6x40	
17	H800-80036	Bolt M6x28	
18	H700-70000	Washer 6	
19	H800-80028	Bolt M6x10	
20	D40-40206	Pump Cover Plug M18x1.5	
21	D40-40207	Hose Connector, Bent	
22	H800-80006	Bolt M6x12	
23	D40-40209	O-Ring 17x2	



NO.	Part NO.	Description
1	D40-40210	Throttle Body
2	D40-40211	Injector Bracket, Left
3	D40-40212	Clamp 13
4	D40-40213	Tubing, High Pressure
5	D40-40214	Injector Bracket, Right
6	D40-40215	O-Ring 6x4.5
7	D40-40216	Fuel Injector
8	D40-40217	O-Ring 9.5x2.5
9	D40-40218	Clamp 38-57
10	D40-40219	Intake Manifold
11	D100-00007	Fuel injection system assembly



JOHNNY
PAG Motor Company
All parts © Copyright Johnny Pag Motor Company

NO.	Part NO.	Description
1	D40-40220	Radiator
2	H500-50155	Rubber Bushing
3	H500-50156	Sleeve
4	C20-20056	Fan Switch
5	D40-40224	Radiator Cap
6	D40-40225	Radiator Cover
7	H600-60014	crosshead screw M6X12
8	H700-70004	Washer $\Phi 4 \times 12 \times 3$
9	H600-60015	Tapping srew ST3.8
10	C20-20057	Radiator Fan
11	H900-90001	Nut M6
12	H700-70000	Washer 6
13	H700-70005	Spring Washer6
14	H800-80004	hex bolt M6X16
15	D40-40234	Radiator Hose, Upper
16	H500-50140	Clamp19-29
17	D40-40236	Spring, Hose Cover, lower
18	D40-40237	Radiator Hose, Lower
19	D40-40238	Radiator Reservoir
20	D40-40239	Filler Cap
21	H500-50141	Clamp 15
22	D40-40241	Filler Hose
23	D40-40242	Reservoir Hose
24	H500-50142	Clamp 11